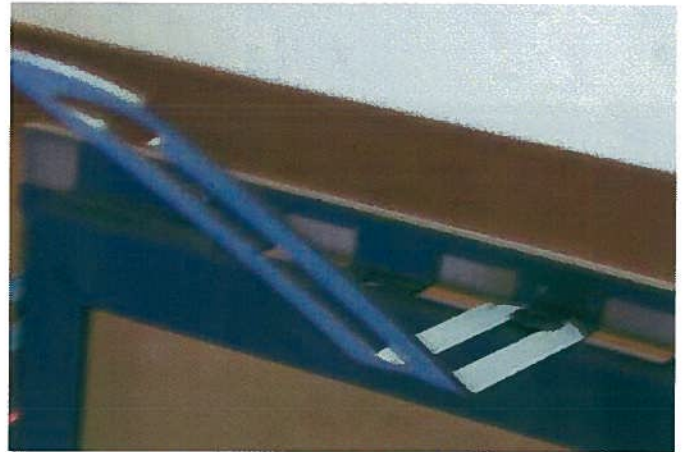


# Z-FYRE ELITE II

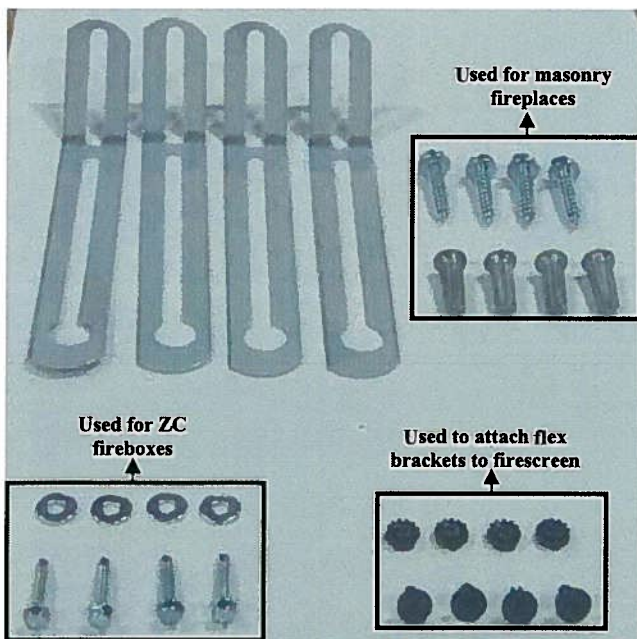
## Instruction Sheet



### Tools needed:

- #1 Phillips Screw Driver
- #2 Phillips Screw Driver
- 5/16" Carbide Masonry Bit
- Drill
- Hammer
- 7/16" Wrench (socket or box)

Top and bottom mount



### STEP 1 - Inventory parts included with kit.

- (4) Lead Anchors (for 1/4" lag bolts)
- (4) #8x1 Self Drilling HWH2P Sheet Metal Screws
- (4) #10-24 x 3/8" Pancake Head Screws
- (4) Lintel Flex Brackets
- (4) 1/4" x 1-1/4" Lag Bolts
- (2) #10-24 Nuts w/lockwasher
- (4) #10 SAE Flat Washers

Side Mount